

# AED-Alert™ 2.0

Remote AED Management System

## Stay Connected, Stay Confident

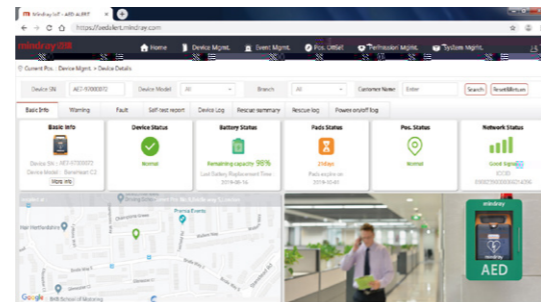


## Help improve survival rates with AED-Alert™ 2.0

Sudden Cardiac Arrest (SCA) can strike anyone at anytime, so it's essential to keep your fleet of AEDs ready for rescue. Traditional manual inspection of AED devices is time-consuming and labor-intensive. The AED-Alert™ 2.0 provides a quick and efficient way to remotely manage AEDs based on the IoT technology.

### Detailed information for individual device

- AED self-test results & log review
- 4G connection status
- Map and photo overview of the installation locations
- Device and configuration information
- Prioritised notifications of pads expiration and battery capacity
- Automatically register new replacement items

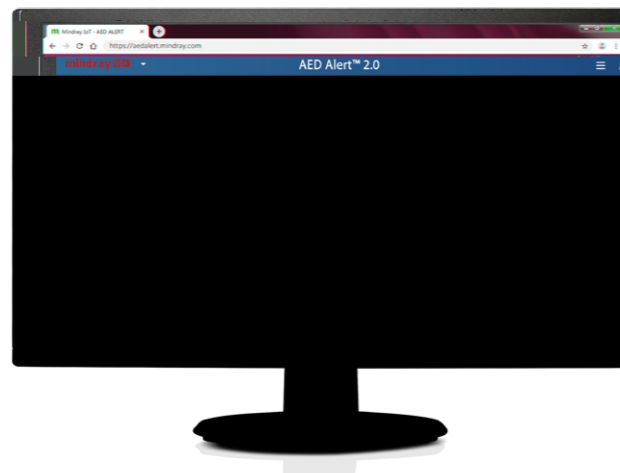


### AED Dashboard: Complete visibility of all your devices

Readiness overview: self-test status, out of location, 4G connection status

AED readiness map

Pads expiration, battery capacity and device warranty in histogram



1 year/1 month trend chart of installed AEDs

Sum of AEDs with error unhanded in 7/30 days

1 month trend chart of AEDs readiness

## Enable efficient fleet management by remotely connecting every AED

With the support of IoT technology, AED-Alert™ 2.0 enhances the remote management of BeneHeart C series AEDs through 4G or Wi-Fi network, makes caring for your fleet of remote AEDs safer and more cost-effective.

### Remote self-monitor

- No need for manual AED inspections to ensure device readiness
- Automatically send Email alerts if any device's status changes, such as pads expire

### Extensive coverage

- Cloud server removes the need for local storage
- Manage an unlimited number of AEDs
- Manage a mixed fleet of AEDs, even those that are not internet connected

### Flexible access

- Secure access to the AED-Alert™ 2.0 management tool via any internet browser
- Get Email alerts without login in

## Safe and secure solutions for ultimate AED confidence

- Supplied by original manufacturer
- Direct device data transfer
- Wi-Fi option available

Local cloud server for efficient, stable and safe data storage

Compliant with EU General Data Protection Regulation to protect user and device data privacy