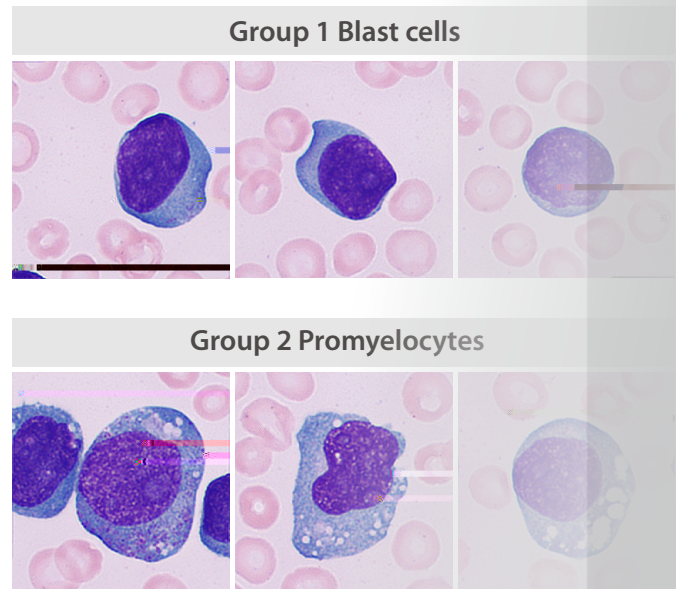




# Peripheral blood morphology examination

Pre-classification by the Mindray digital morphology analyzer MC-80



Cytochemical staining results showed:

**POX**  
(+)

**PAS**  
(+)

**AS-DC**  
(partial +)

**a-NAE**  
(+)

**NBE**  
(+)

**NAE**  
inhibited

## About Acute Myelomonocytic Leukemia (AML-M4)

- = 20%
- 
- = 20%
- 

## Case analysis

M4 is a type of acute granulocytic leukemia and is divided into four subtypes, i.e., M4a, M4b, M4c, and M4Eo.

**M4a**



= 20%

**M4b**



= 20%

**M4c**



= 30%

**M4Eo**

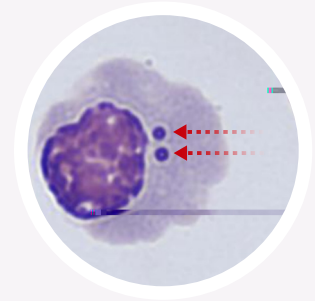


% 30%

## How much do you know?



Look closely at this red cell



What kind of morphological abnormalities of erythrocytes are indicated by the arrows?

- |            |              |                     |
|------------|--------------|---------------------|
| <b>A</b>   | <b>B</b>     | <b>C</b>            |
| Cabot ring | Döhle bodies | Howell-Jolly bodies |

The answer will be announced in the next slide.

## Invitation of Clinical Case Sharing

- Do you have any case to share? **Upcoming issues**
- IVD Case:
- Form: "Case Introduction, Case Detail, Case Analysis, and Evaluation Summary."
- Please send the case to T. Hoishan Kwok (in English). Email: [hoishan.kwok@Mindray.com](mailto:hoishan.kwok@Mindray.com) by 30.09.2023.
- The email should contain the following information: