



Peripheral blood smear analysis

Hematological malignancy is one of the most common categories of cancer^[1]. When the human body is affected by hematological malignancies, hematological malignant cells (such as blasts, abnormal promyelocytes and abnormal lymphocytes, etc.) may appear in peripheral blood. Therefore, accurate detection of hematological malignant cells in peripheral blood is of great significance for the early screening, disease monitoring, and prognosis assessment of hematological malignancies.

Figure 1. The illustration of BC-7600 series in early diagnostics

Mindray's automated hematology analyzer integrates the innovative SF Cube technology platform and the newly launched Hematological Malignant Cells (HMC) channel. Consequently, it achieves precise detection of blasts, abnormal promyelocytes and abnormal lymphocytes. This provides strong support for the screening of hematological malignancies. The mechanism of HMC channel is illustrated in this chapter.



Given that blast cells, abnormal lymphocytes, and abnormal promyelocytes have significant differences from other cells in three key dimensions^{[2][3][4]}: the proportion of the phospholipid in the cell membrane, the spatial complexity of the nuclear DNA, and the complexity of the cytoplasmic internal structure, we have carefully designed a reagent reaction system based on specific principles.

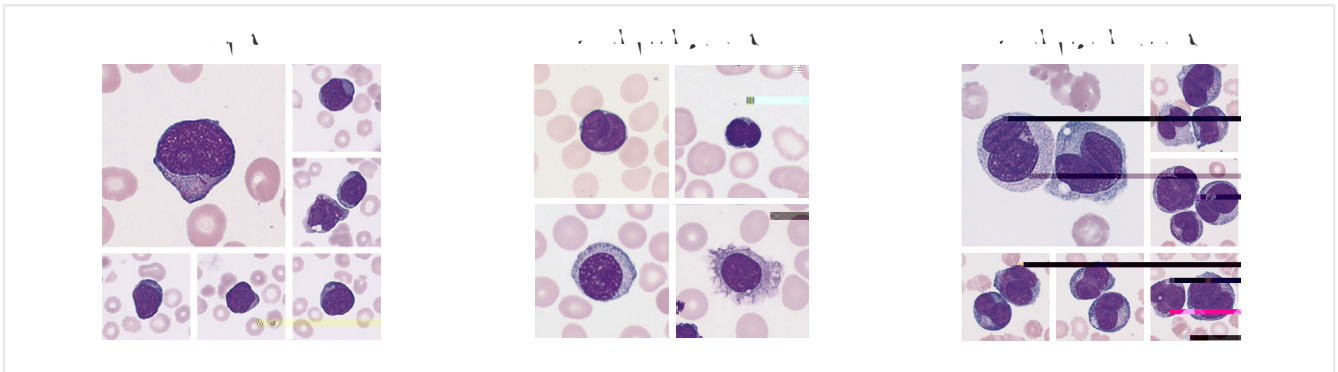


Figure 2. The image of abnormal cells under MC-80

Firstly, cells react with LM lysing agent. When the LM lysing agent acts on the cell membrane, it will dissolve the phospholipid within the membrane, and then enter the cell, causing differential changes in the optical refractive index of various cells. Blasts have a high percentage of phospholipid in their cell membranes, and after treatment, a large amount of LM lysing enters the blasts, resulting in a decrease in their optical refractive index. Since the level of the optical refractive index of the cell will have an effect on the strength of the forward scattered light signal, the detection and identification of blasts can be realized with the help of the difference of the forward scattered light signal between various types of cells.

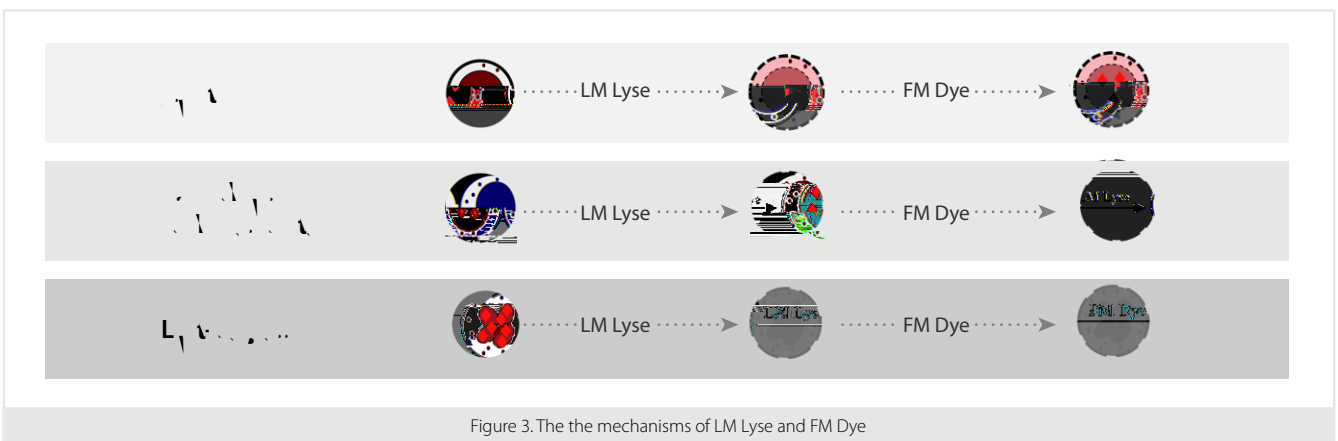


Figure 3. The the mechanisms of LM Lyse and FM Dye

After LM treatment, the FM fluorescent dye enters into the nucleus. The chemical structure of the FM dye can specifically bind to the

Cube three-dimensional analysis algorithm, it successfully achieves precise identification and detection of blast cells, abnormal promyelocytes, and abnormal lymphocytes by capturing and analyzing forward scatter (FS), fluorescence signals (FL), and side scatter (SS), providing key clues for disease screening.

	FL	SS	FS	FL	SS
Blast	Strong	Weak	Weak~Medium	Weak	Weak~Medium
Lymphocyte & abnormal lymphocyte	Strong	Medium~Strong	Weak~Medium	Weak	Medium~Strong
Abnormal Promyelocyte	Medium	Weak	Strong	Medium~Strong	Weak~Medium
Normal WBCs	Weak	Medium~Strong	Medium~Strong	Medium~Strong	Medium~Strong

Table 1. The characteristics of various abnormal cells

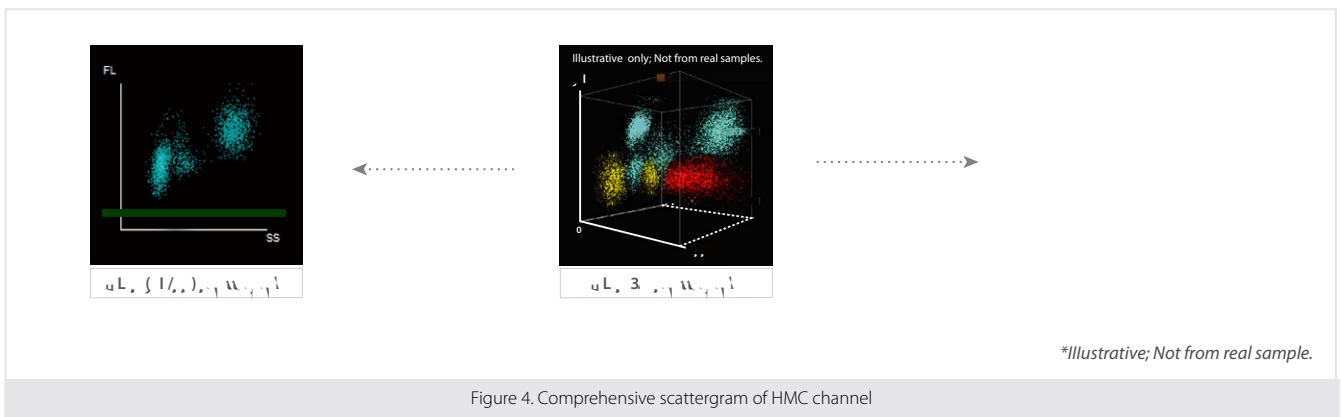


Figure 4. Comprehensive scattergram of HMC channel

03

The HMC channel provides an efficient and reliable solution for accurate screening of hematological malignant cells in peripheral blood by innovatively combining LM and FM. In terms of clinical application, HMC channel can effectively detect hematological malignant cells in peripheral blood under different scenarios of blood diseases through many actual cases, providing key initial screening clues for subsequent diagnosis of the disease, assisting clinicians to make timely and accurate judgments, and formulating reasonable treatment plans, which plays a positive role in improving the prognosis of the patients and increasing the cure rate. More clinical cases will be illustrated in the next chapter.

mindray

healthcare within reach

Linked in

@Mindray



@Mindray Global



P/N: HMC Channel: Accurate Identification of Abnormal WBCs in Peripheral Blood-210285X4P -20250807

©2025 Shenzhen Mindray Bio-Medical Electronics Co.,Ltd. All rights reserved.