

**DICOM CONFORMANCE STATEMENT**  
**FOR DP-5/DP-5T/DP-5E/DP-5S/DP-5B/DP-7/DP-7T**  
**Diagnostic Ultrasound System**



**SHENZHEN MINDRAY BIO-MEDICAL ELECTRONICS CO., LTD.  
ALL RIGHTS RELEASE**

# 1 Conformance Statement Overview





## **2 Table of Contents**



## **3 Introduction**

### **3.1 Review History**

<b>Document Version</b>	<b>Date of Issue</b>	<b>Description</b>
1.0	July 13, 2011	First Release Version

### **3.2 Audience**

### **3.3 Remarks**

•

•

•

•

•

•

•

•

•

•

•

•

•

•

- 

- 

### **3.5 Acronyms, Abbreviations, and Symbols**

- 

- 

- 

- 

- 

- 

- 

- 

- 

- 

- 

- 

- 

- 

- 

- 

- 

- 

- 

- 

- 

- 

- 

- 

- 

- 

-

- 
- 
- 
- 

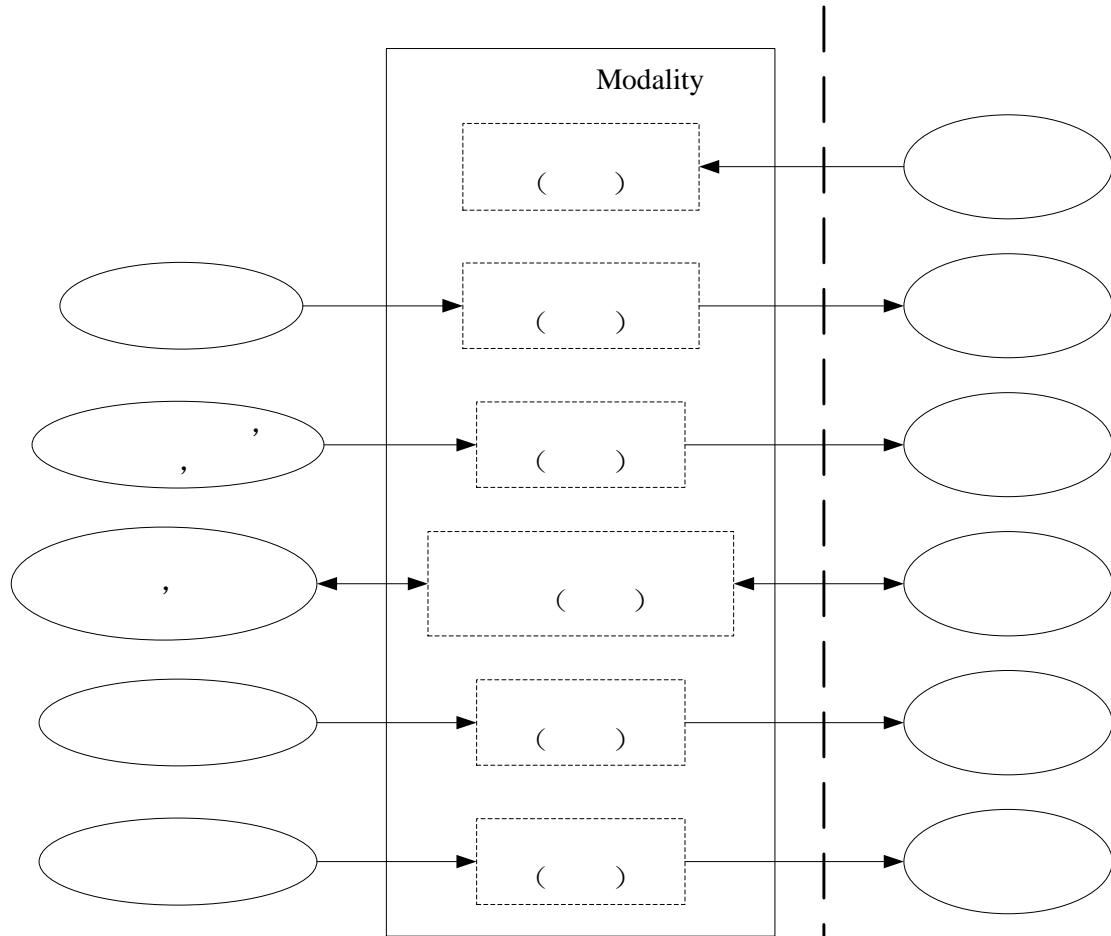
## 3.6 References

<http://medical.nema.org/>

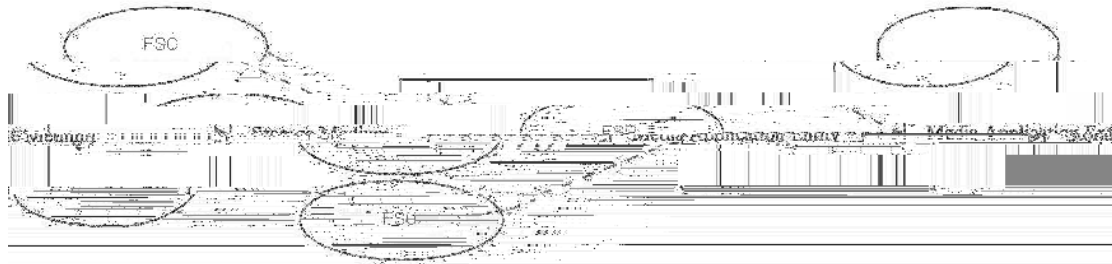
# 4 Implementation Mode

## 4.1 Application Data Flow

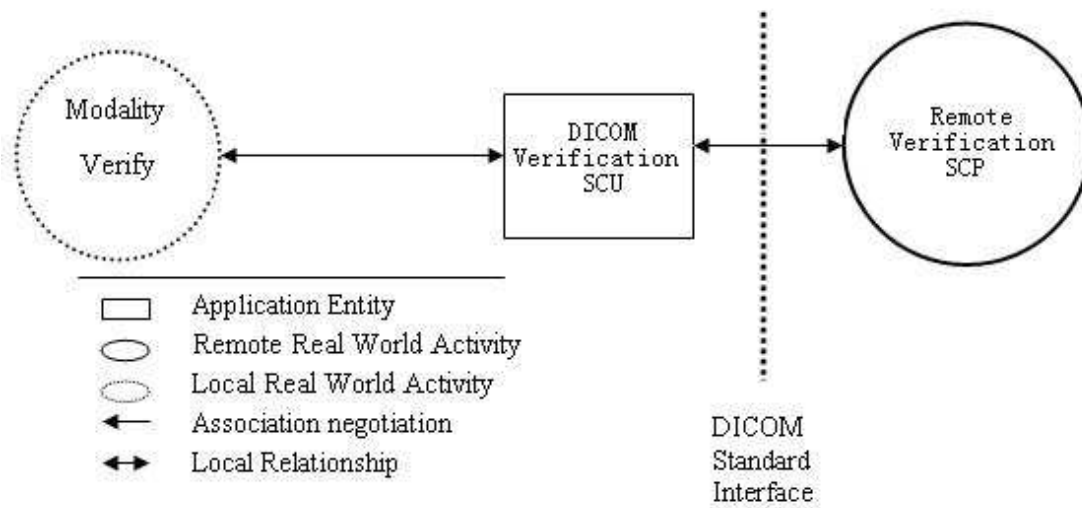
### 4.1.1 Networking



## 4.1.2 Media Interchange



## 4.2 Verification



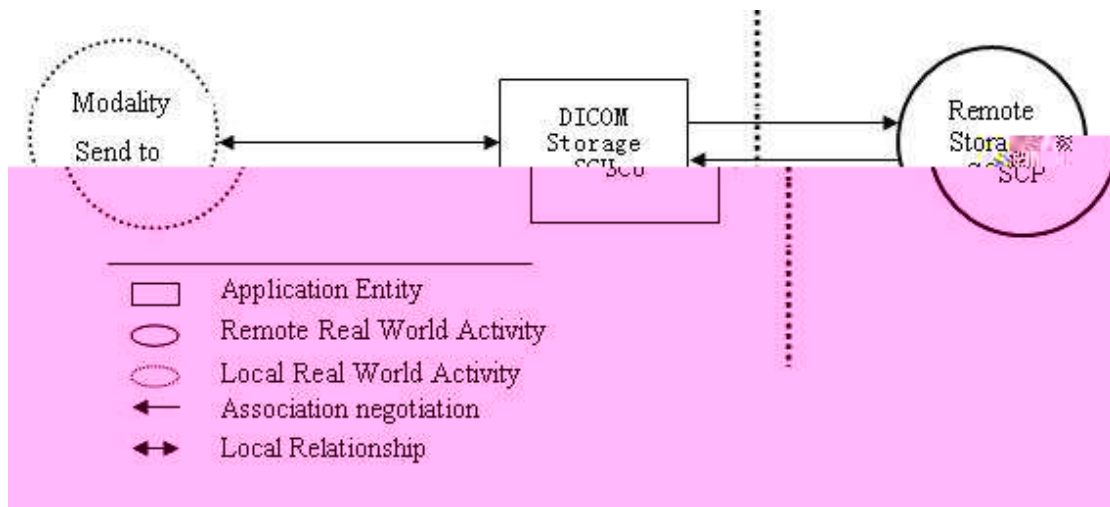
## 4.2.1 Sequence of Real World Activities

### 4.2.1.1 Features

### 4.2.1.2 Operation

## 4.3 Storage

### 4.3.1 Application Data Flow Diagram



### 4.3.2 Functional Definitions of Application Entities

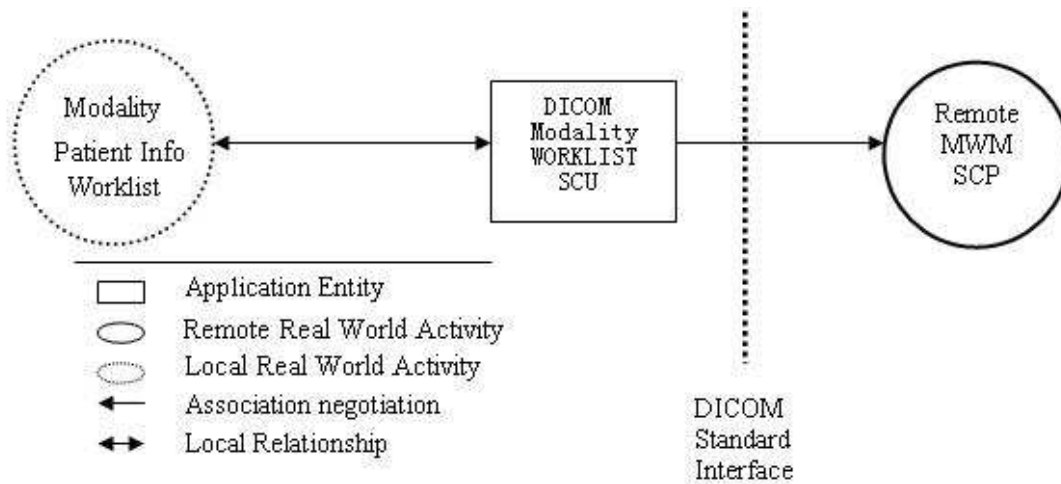
### 4.3.3 Sequence of Real World Activities

#### 4.3.3.1 Features

#### **4.3.3.2 Operation**

### **4.4 Modality Worklist Management (MWL)**

#### **4.4.1 Application Data Flow Diagram**



## 4.4.2 Functional Definitions of Application Entities

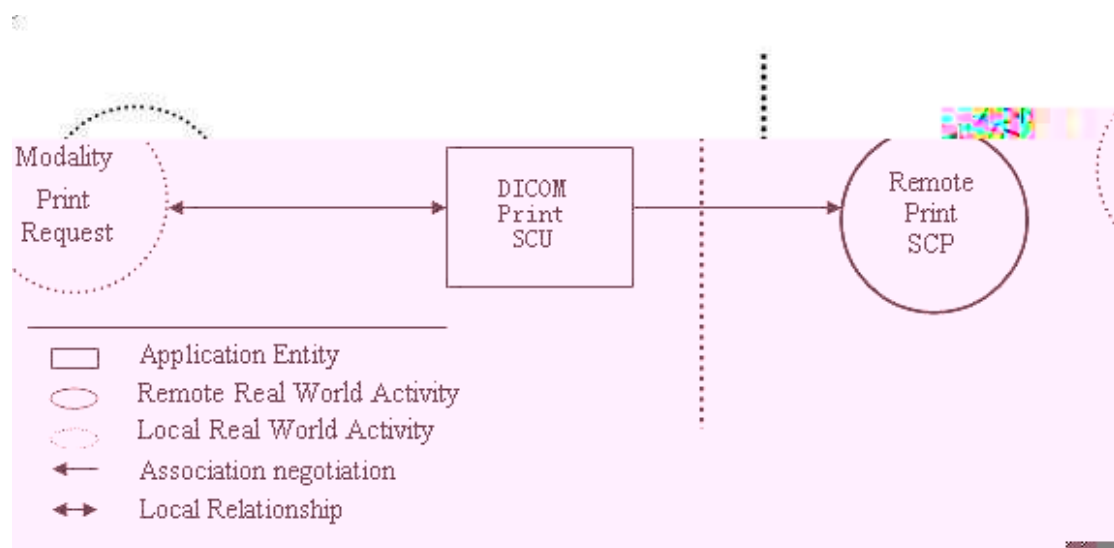
## 4.4.3 Sequence of Real World Activities

### 4.4.3.1 Features

### 4.4.3.2 Operation

## 4.5 Print

### 4.5.1 Application Data Flow Diagram



## **4.5.2 Functional Definitions of Application Entities**

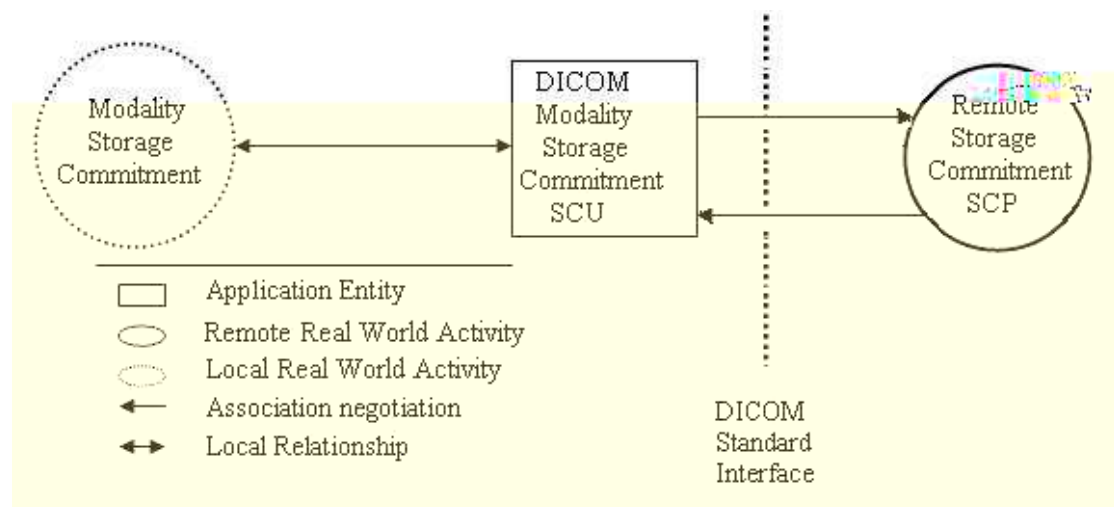
## **4.5.3 Sequence of Real World Activities**

### **4.5.3.1 Features**

### 4.5.3.2 Operation

## 4.6 Storage Commitment

### 4.6.1 Application Data Flow Diagram



## **4.6.2 Functional Definitions of Application Entities**

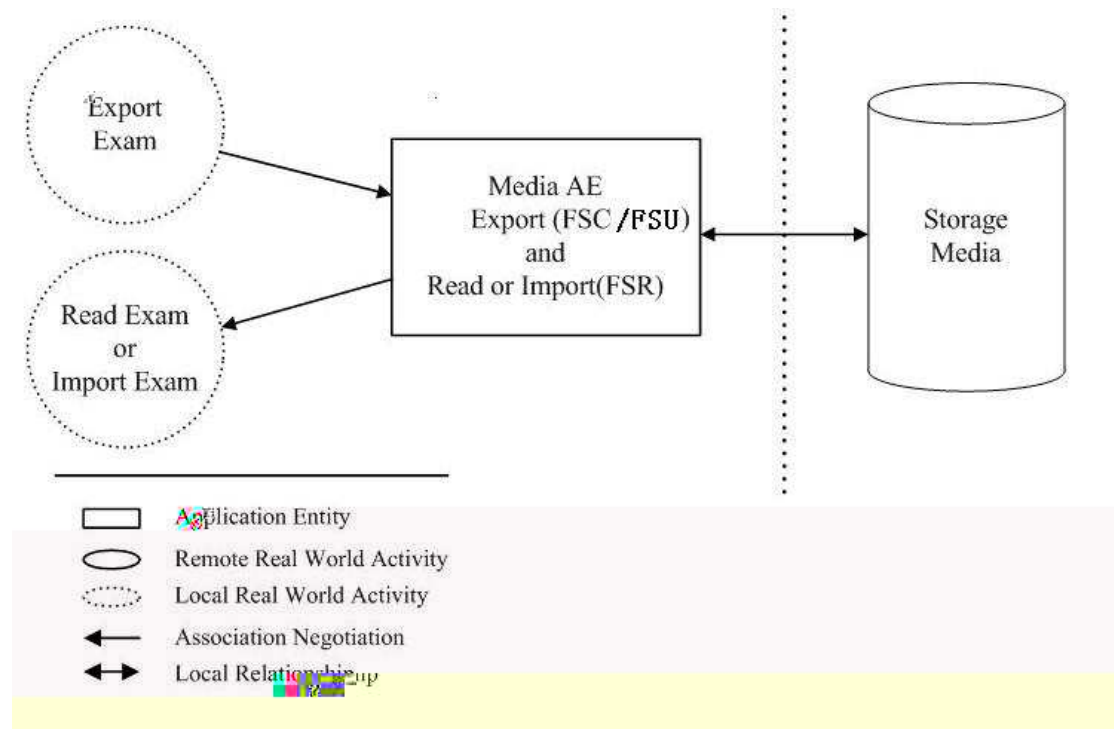
## **4.6.3 Sequence of Real World Activities**

### **4.6.3.1 Features**

### **4.6.3.2 Operation**

## 4.7 Media Storage

### 4.7.1 Application Data Flow Diagram



### 4.7.2 Functional Definitions of Application Entities

## **4.7.3 Sequence of Real World Activities**

### **4.7.3.1 Features**

### **4.7.3.2 Operation**



### **5.1.1.3 Asynchronous Nature**

### **5.1.1.4 Implementation Identifying Information**

## **5.1.2 Association Initiation by Real World Activity**

### **5.1.2.1 Real World Activity – Verification**

#### **5.1.2.1.1 Associated Real World Activity**

##### **5.1.2.1.1.1 Verification SCU**

ECHO-SCU

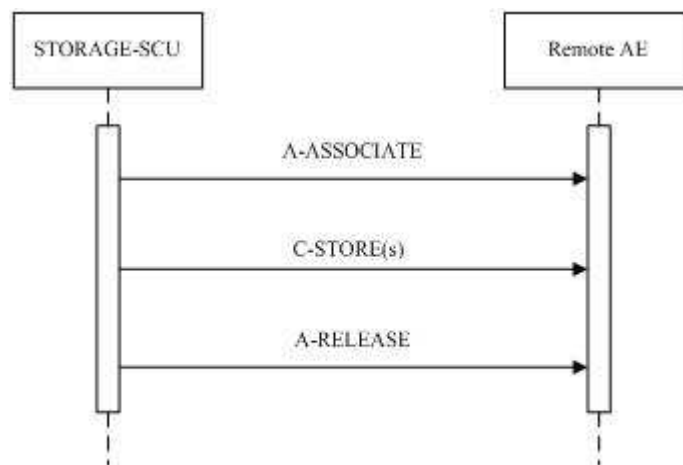
Remote AE




#### 5.1.2.1.2.1 SOP Specific Conformance Statement

### 5.1.2.2 Real World Activity – Storage SCU

#### 5.1.2.2.1 Associated Real World Activity



#### 5.1.2.2.2 Proposed Presentation Contexts















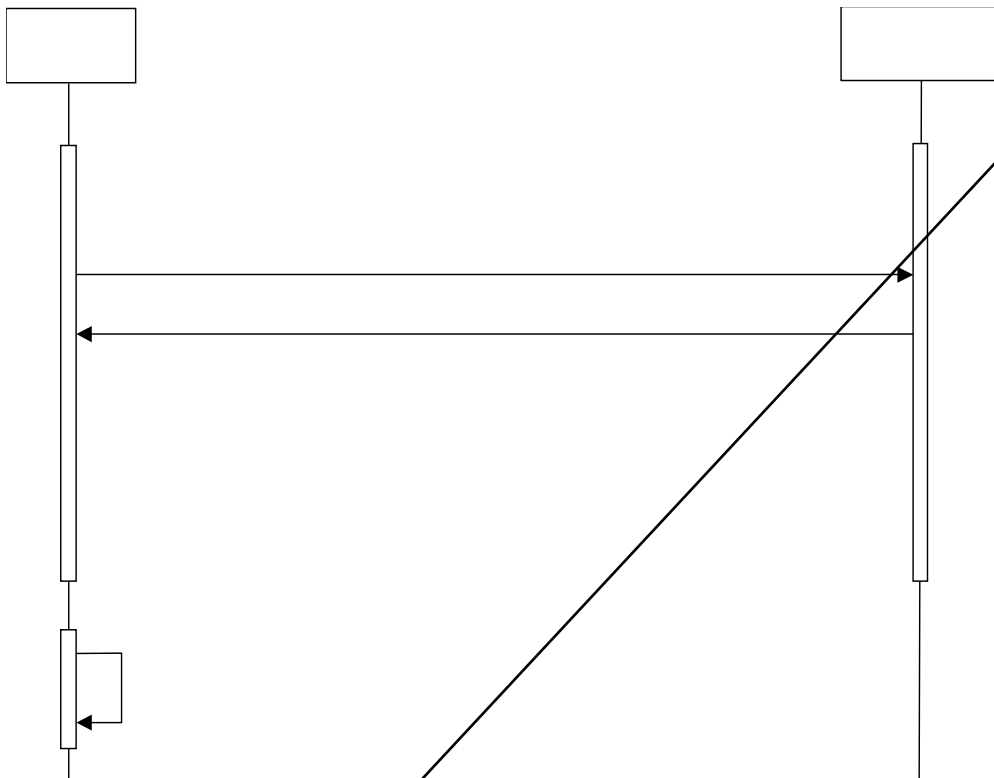






**5.1.2.3 Real World Activity – MWL SCU**

**5.1.2.3.1 Associated Real World Activity**



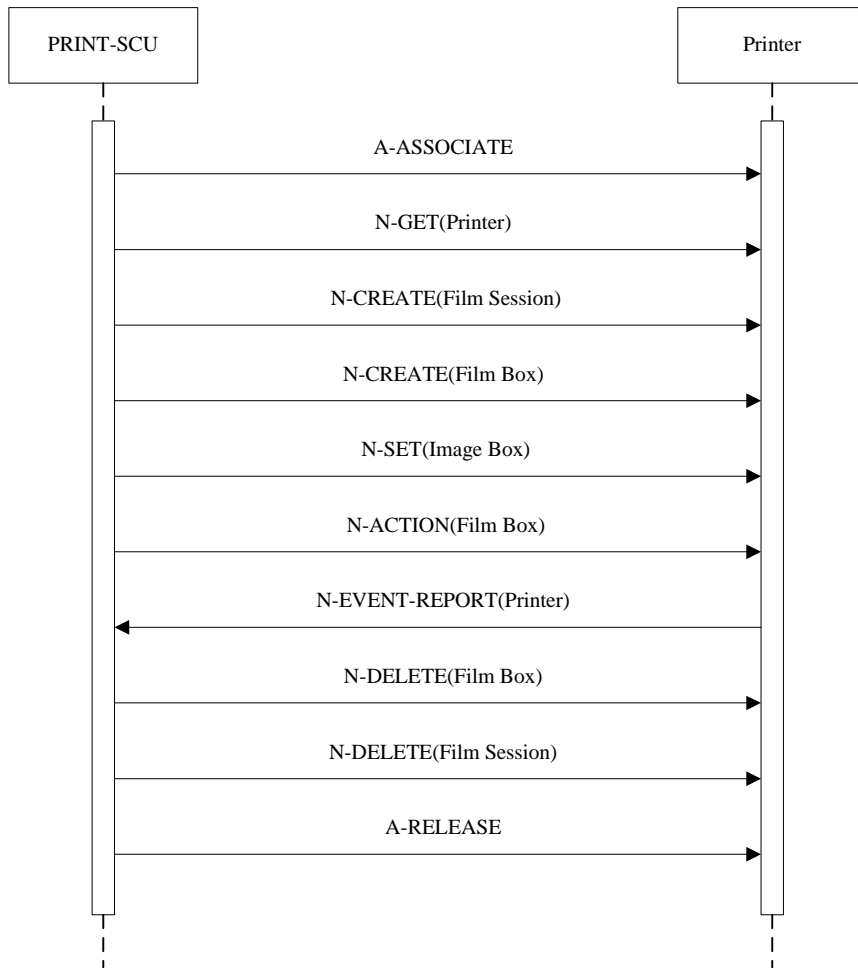




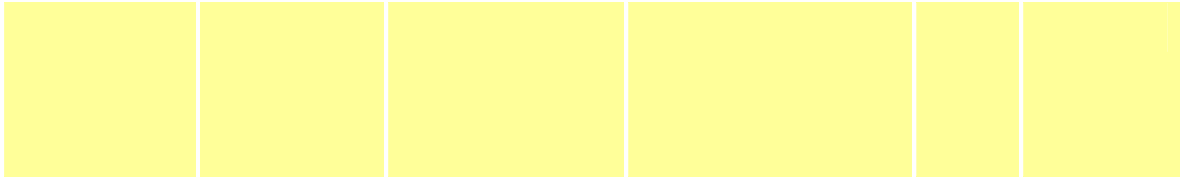








### 5.1.2.4.2 Proposed Presentation Contexts



**5.1.2.4.2.1 SOP Specific Conformance to Basic Grayscale Print Management Meta SOP Class**


**5.1.2.4.2.1.1 SOP Specific Conformance to Basic Film Session SOP Class**



**5.1.2.4.2.1.2 SOP Specific Conformance to Basic Film Box SOP Class**








**5.1.2.4.2.1.4 SOP Specific Conformance to Printer SOP Class**



**5.1.2.4.2.2 SOP Specific Conformance to Basic Color Print Management  
Meta SOP Class**


**5.1.2.4.2.2.1 SOP Specific Conformance to Basic Film Session SOP Class**



**5.1.2.4.2.2.2 SOP Specific Conformance to Basic Film Box SOP Class**









#### **5.1.2.4.2.3 Error Handling**



#### **5.1.2.5 Real World Activity – Storage Commitment SCU**

##### **5.1.2.5.1 Associated Real World Activity**

### 5.1.2.5.2 Proposed Presentation Contexts




				( )	( )


**5.1.2.5.2.1 SOP Specific Conformance Statement**

**5.1.2.5.3 Error Handling**

## **5.2 Media AE Specification**

### **5.2.1 MODALITY AE Specification**

#### **5.2.1.1 File Meta Information Options**

#### **5.2.1.2 Ultrasound Application Profile**



### **5.2.2 Real World Activity**

#### **5.2.2.1 Proposed Presentation Context**

##### **5.2.2.1.1 Export Exam**












### 5.2.2.3 Error Handling



# **7 Extensions/Specialization/Privatization**

## **7.1 Standard Extended / Specialized / Private SOPs**

## **7.2 Private Transfer Syntaxes**

# 8 Configuration

## 8.1 AE Title/Presentation Address Mapping

## 8.2 Configurable Parameters

Localhost DICOM Service Property(Including SCU and SCP):

- 
- 
- 

Server Setting:

- 
- 
- 
- 
- 
- 

Storage:

- 
- 
- 
- 
- 
- 
- 

WORKLIST:

- 
- 
- 

**Print:**

- 
- 
- 
- 
- 
- 

- 
- 
- 
- 
- 





- 
- 
- 
- 
- 
- 

**Storage Commitment:**

- 
- 
- 
-

## **8.3 Un-Configurable Parameters**

## **9 Support of Extended Character Sets**

